



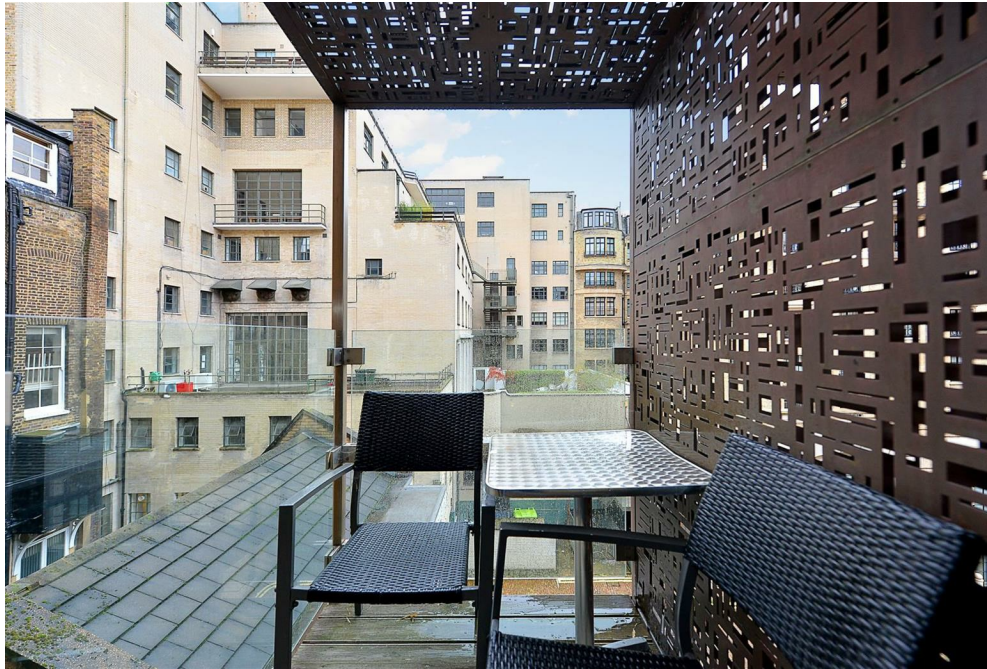
10, Weymouth Street,
Marylebone, W1W

£1,100 Per Week,

NAPIER WATT

T: 0207 935 0011
E: enquiries@napierwatt.co.uk
W: napierwatt.co.uk

35 Berkeley Square, Mayfair, London, W1J 5BF







Description

A luxury two bedroom, two bathroom apartment extending to 702 sq ft situated in the heart of the West End. Interior designed in a contemporary style to a high standard the apartment offers bright and spacious accommodation, fully fitted kitchens, tiled bathrooms and 24 hour portage.

Air conditioning and parking by separate negotiation. Wifi, cleaning and laundry available by separate negotiation. Available from 8th October 2025

Westminster council tax band F

Key Features

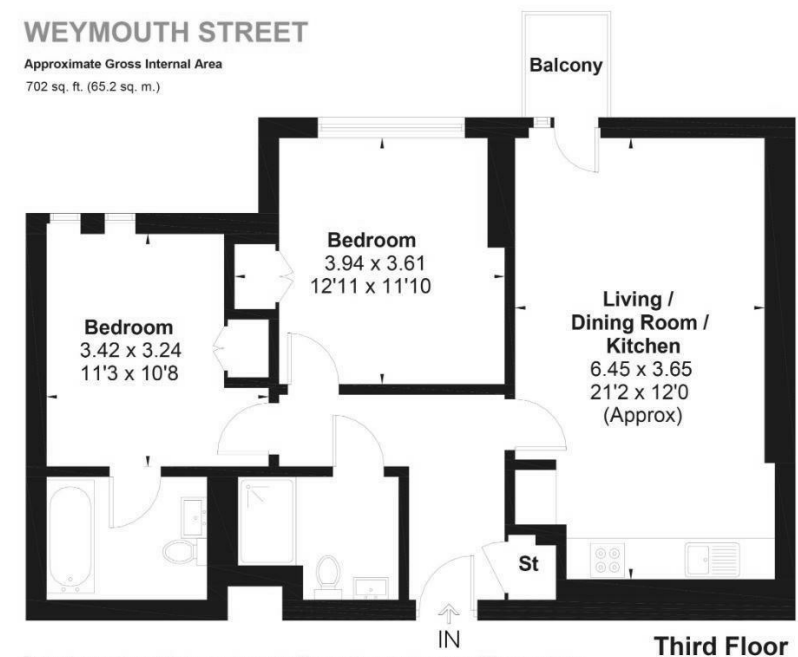
- LIFTS
- 24 PORTERS
- AVAILABLE NOW
- 1 MONTHS FREE RENT FOR 12 MONTH TENANCY
- AIR CONDITIONING
- BALCONY
- FURNISHED
- UTILITIES INCLUDED

Terms

Fees & Charges: Tenancies exceeding £100,000 Per annum £480 inc VAT, Tenancies where a company is a tenant £480 Inc VAT.

WEYMOUTH STREET

Approximate Gross Internal Area
702 sq. ft. (65.2 sq. m.)



This plan is for layout guidance only. Not drawn to scale unless stated. Windows and door openings are approximate. Whilst every care is taken in the preparation of this plan, please check all dimensions, shapes and compass bearings before making any decisions reliant upon them.
ID 749838

IMPORTANT: We would inform prospective purchasers that these sales particulars have been prepared as a general guide only. A detailed survey has not been carried out, nor the services, appliances and fittings tested. Room sizes should not be relied upon for furnishing purposes and are approximate. If floor plans are included, they are for guidance only and illustration purposes only and may not be to scale. If there are any important matters likely to affect your decision to buy, please contact us before viewing the property.